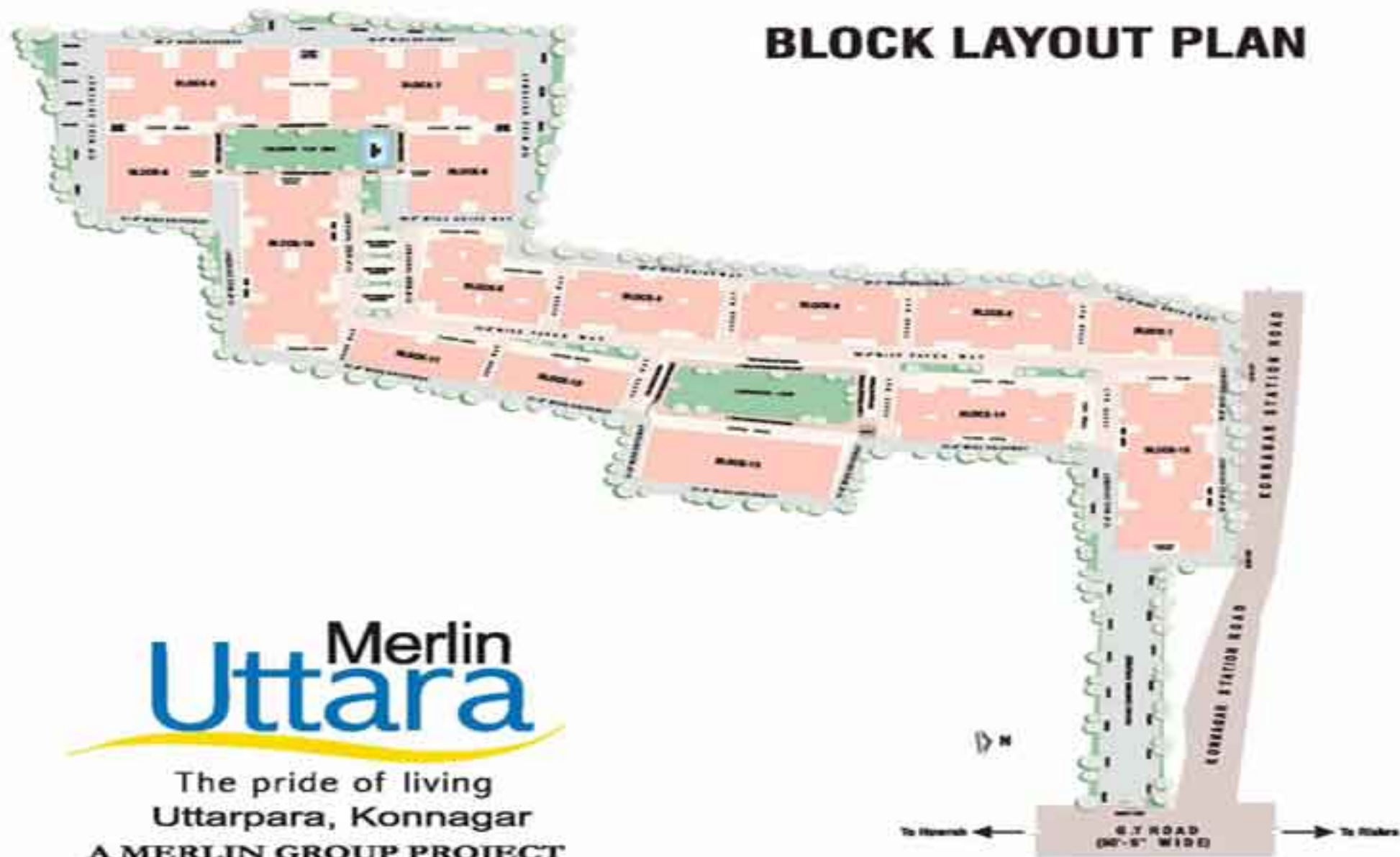


Site Address : 94/6K & 94/7K, G.T. Road
near Dharsa Petrol Pump

BLOCK LAYOUT PLAN



Merlin
Uttara

The pride of living
Uttarpara, Konnagar
A MERLIN GROUP PROJECT



**BLOCK-14
(TYPICAL FLOOR PLAN)**



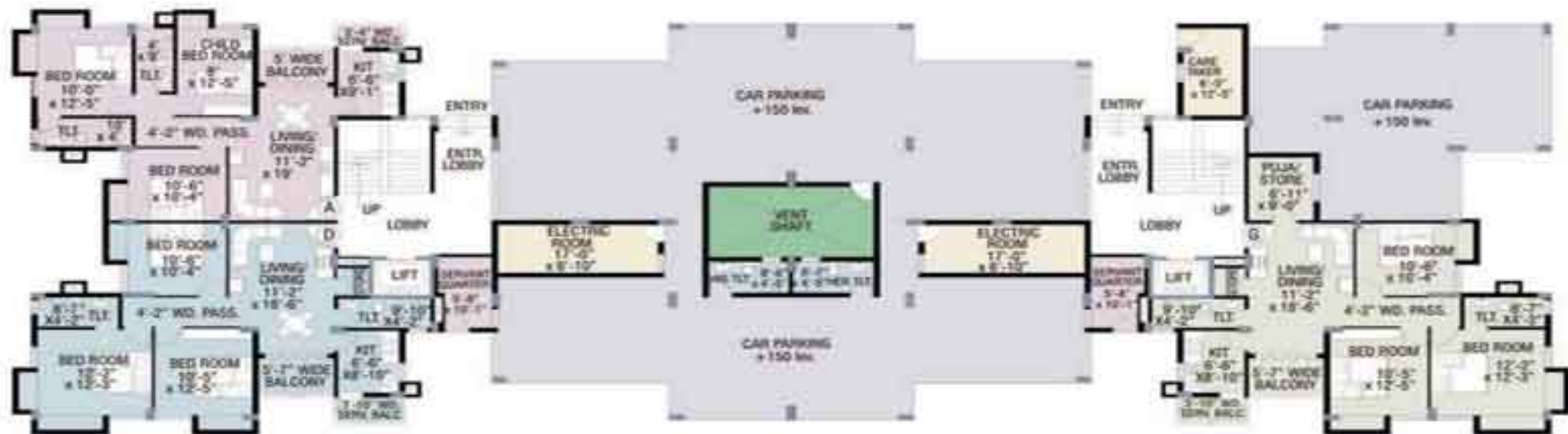
| FLAT TYPE | BUILT-UP AREA | SUPER BUILT-UP AREA |
|-----------|---------------|---------------------|
| A-3BHK | 816 SQFT. | 1020 SQFT. |
| B-2BHK | 654 SQFT. | 817 SQFT. |
| C-2BHK | 745 SQFT. | 931 SQFT. |
| D-2BHK | 745 SQFT. | 931 SQFT. |
| E-2BHK | 654 SQFT. | 817 SQFT. |
| F-3BHK | 816 SQFT. | 1020 SQFT. |



**TYPICAL FLOOR PLAN (1ST TO 4TH.)
OF BLOCK- 15**

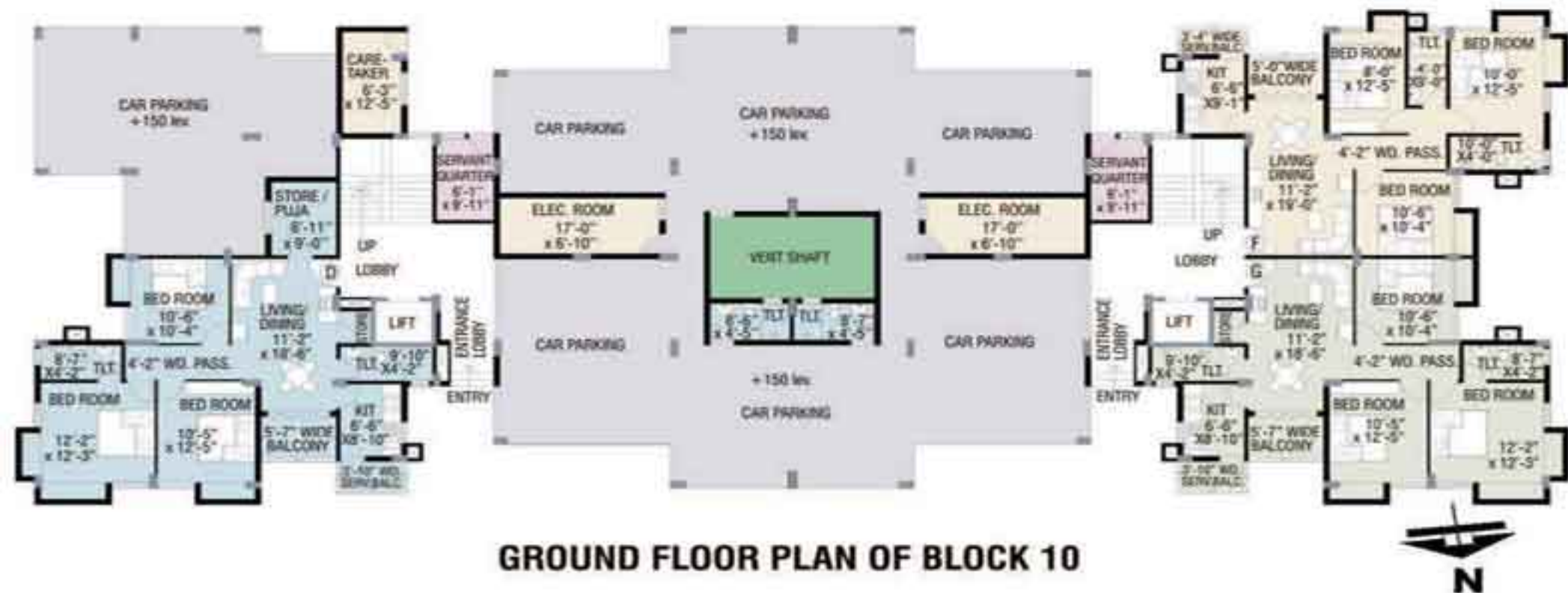


| FLAT TYPE | BUILT-UP AREA | SUPER BUILT-UP AREA |
|-----------|---------------|---------------------|
| A-3BHK | 913 SQFT. | 1141 SQFT. |
| B-3BHK | 864 SQFT. | 1080 SQFT. |
| C-3BHK | 867 SQFT. | 1084 SQFT. |
| D-3BHK | 985 SQFT. | 1231 SQFT. |
| E-3BHK | 864 SQFT. | 1080 SQFT. |
| F-3BHK | 913 SQFT. | 1141 SQFT. |
| G-3BHK | 985 SQFT. | 1231 SQFT. |
| H-3BR | 867 SQFT. | 1084 SQFT. |



GROUND FLOOR PLAN OF BLOCK 15

| FLAT TYPE | BUILT-UP AREA | SUPER BUILT-UP AREA |
|-----------|---------------|---------------------|
| A-3BHK | 913 SQFT. | 1141 SQFT. |
| D-3BHK | 985 SQFT. | 1231 SQFT. |
| G-3BHK | 985 SQFT. | 1231 SQFT. |



GROUND FLOOR PLAN OF BLOCK 10

| FLAT TYPE | BUILT-UP AREA | SUPER BUILT-UP AREA |
|-----------|---------------|---------------------|
| D- 3BHK | 985 SQFT. | 1231 SQFT. |
| F- 3BHK | 913 SQFT. | 1141 SQFT. |
| G- 3BHK | 985 SQFT. | 1231 SQFT. |



**TYPICAL FLOOR PLAN (1ST TO 4TH.)
OF BLOCK- 10**



| FLAT TYPE | BUILT-UP AREA | SUPER BUILT-UP AREA |
|-----------|---------------|---------------------|
| A-3BHK | 913 SQFT. | 1141 SQFT. |
| B-3BHK | 864 SQFT. | 1080 SQFT. |
| C-3BHK | 867 SQFT. | 1084 SQFT. |
| D-3BHK | 985 SQFT. | 1231 SQFT. |
| E-3BHK | 864 SQFT. | 1080 SQFT. |
| F-3BHK | 913 SQFT. | 1141 SQFT. |
| G-3BHK | 985 SQFT. | 1231 SQFT. |
| H-3BHK | 867 SQFT. | 1084 SQFT. |



Merlin
Uttara

Uttarpara - Konnagar



2/3/4 BHK Affordable Lifestyle Homes

Starting
₹30 Lacs
onwards

The advertisement features a large background image of a modern apartment complex at dusk, with balconies lit up and cars on a road in front. A sign at the entrance reads 'MERLIN UTTARA'. On the left, there are three smaller inset images: a swimming pool with a playground, a landscaped area with palm trees, and an aerial view of the entire project. The text 'Merlin Uttara' is prominently displayed in the upper center, with 'Uttarpara - Konnagar' below it. A dark box in the bottom right corner contains the project's key selling points.

Merlin Uttara

Uttarpara – Konnagar

**2/3/4 BHK Affordable
Lifestyle Homes**

₹30 Lacs onwards